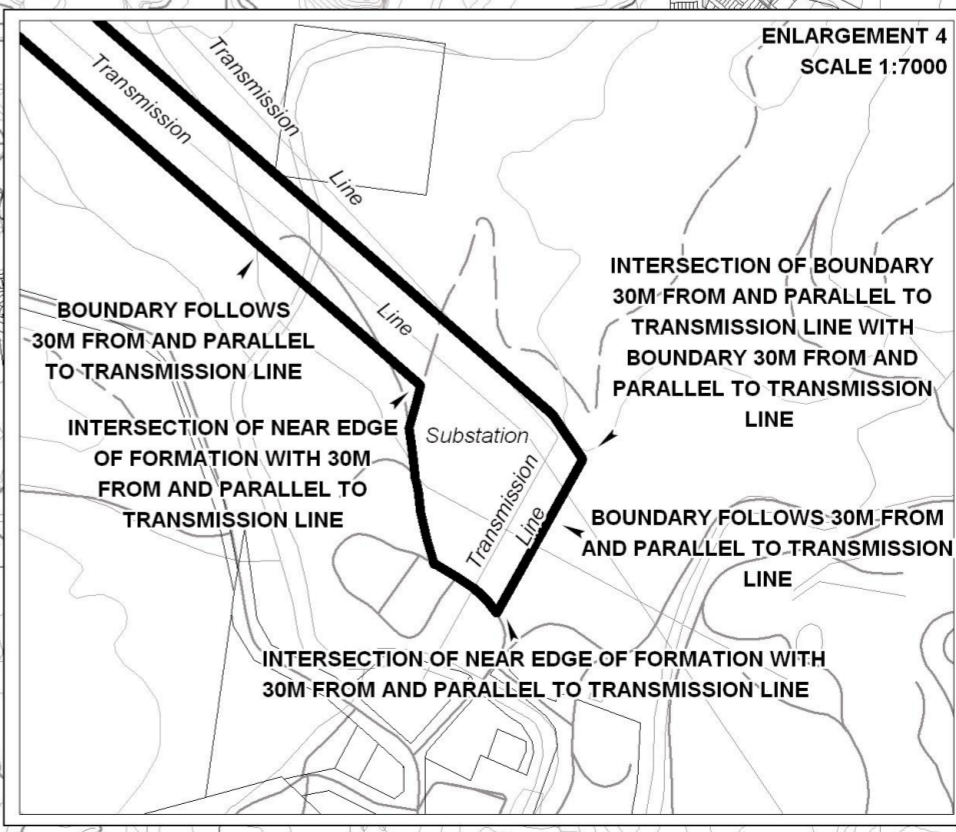
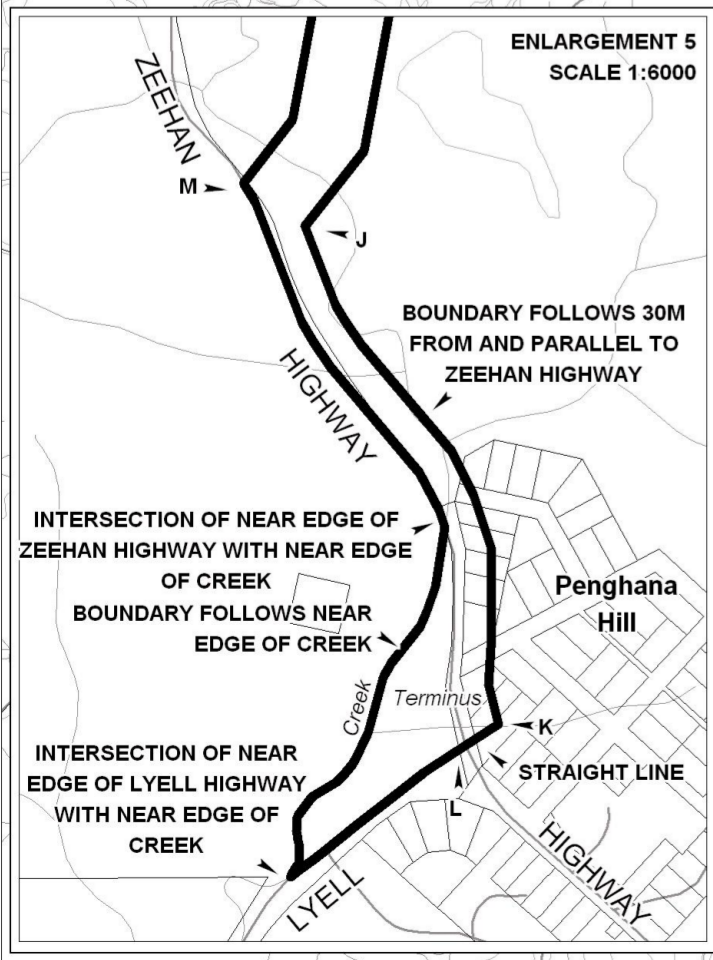
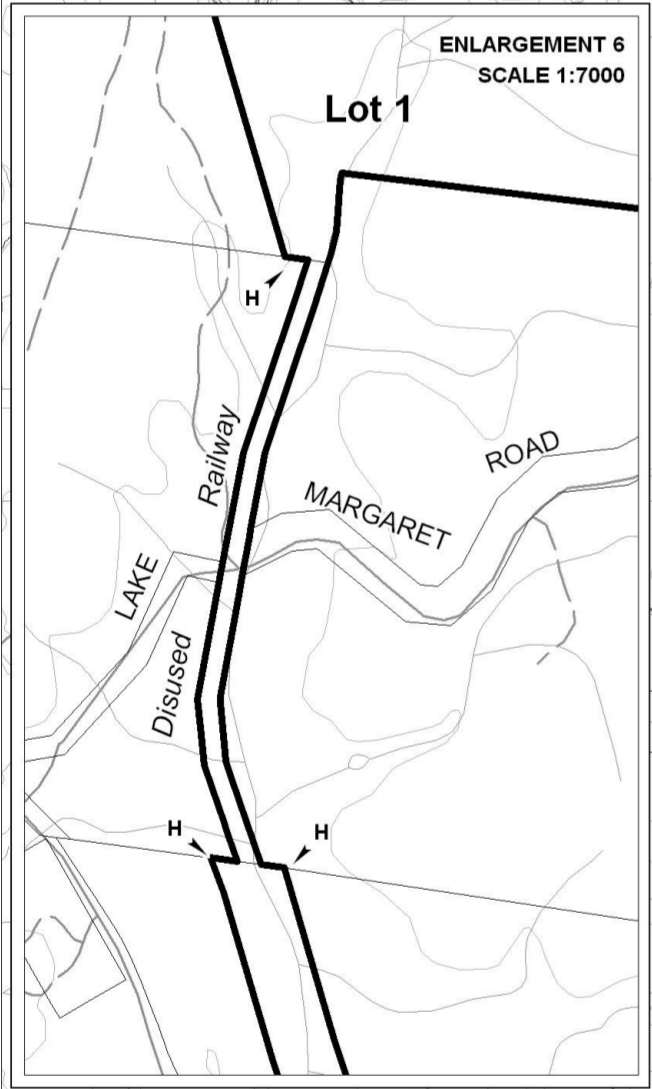
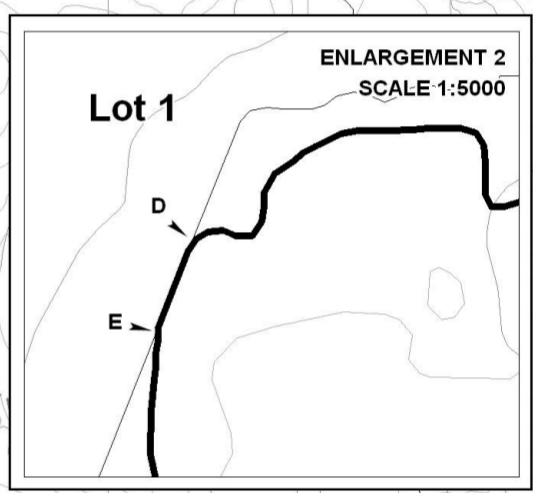
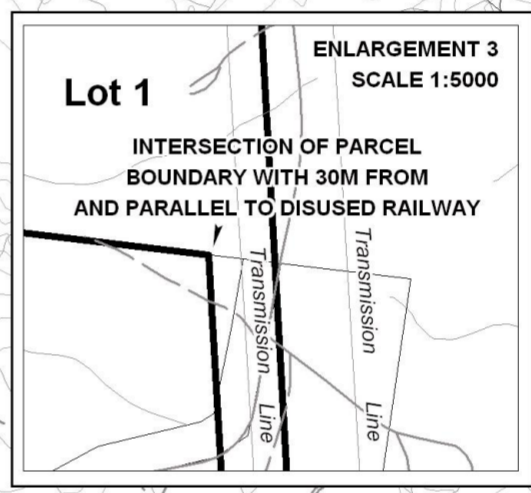
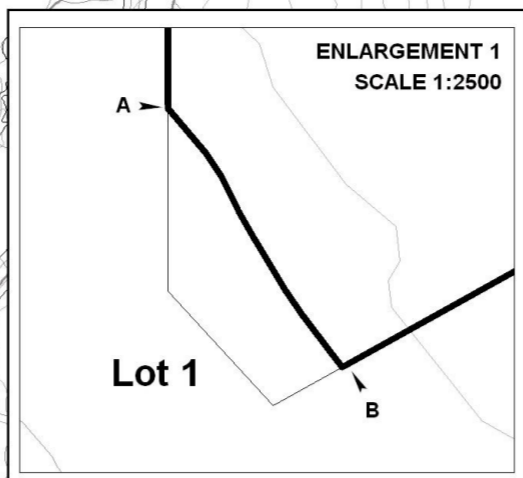


**NOTE:**

1. All boundaries of Lot 1 are indicated by heavy black lines and their positions are defined by the accompanying descriptions.
2. All boundaries are parcel boundaries unless otherwise described. Details of individual land parcel boundaries may be accessed through the Land Information System Tasmania (the LIST).
3. Boundaries of Lot 1 along roads, follow the near edge of formation.



**BOUNDARY DESCRIPTION**

A-B	BOUNDARY FOLLOWS CPR3865
B-C	BOUNDARY FOLLOWS LD862
C-D	BOUNDARY FOLLOWS CPR3865
D-E	BOUNDARY FOLLOWS LD862
E-F	BOUNDARY FOLLOWS CPR3865
H-J	BOUNDARY FOLLOWS 30M FROM AND PARALLEL TO DISUSED RAILWAY
L-H	BOUNDARY FOLLOWS 30M FROM AND PARALLEL TO DISUSED RAILWAY

**POINT LOCATION**

A	INTERSECTION OF LD862 WITH CPR3865
B	INTERSECTION OF LD862 WITH CPR3865
C	INTERSECTION OF LD862 WITH CPR3865
D	INTERSECTION OF LD862 WITH CPR3865
E	INTERSECTION OF LD862 WITH CPR3865
F	INTERSECTION OF LD862 WITH CPR3865
G	INTERSECTION OF LD862 WITH 30M FROM AND PARALLEL TO TRANSMISSION LINE
H	INTERSECTION OF PARCEL BOUNDARY WITH 30M FROM AND PARALLEL TO DISUSED RAILWAY
J	INTERSECTION OF 30M FROM AND PARALLEL TO DISUSED RAILWAY WITH 30M FROM AND PARALLEL TO ZEEHAN HIGHWAY
K	INTERSECTION OF CREEK WITH 30M FROM AND PARALLEL TO ZEEHAN HIGHWAY
L	INTERSECTION OF NEAR EDGE OF LYELL HIGHWAY WITH WESTERN SIDE OF ZEEHAN HIGHWAY
M	INTERSECTION OF NEAR EDGE OF ZEEHAN HIGHWAY WITH 30M AND PARALLEL TO DISUSED RAILWAY

