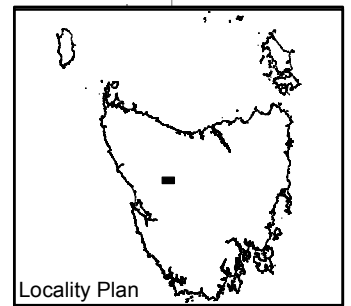
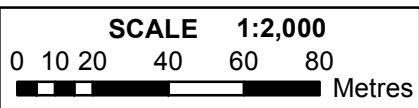
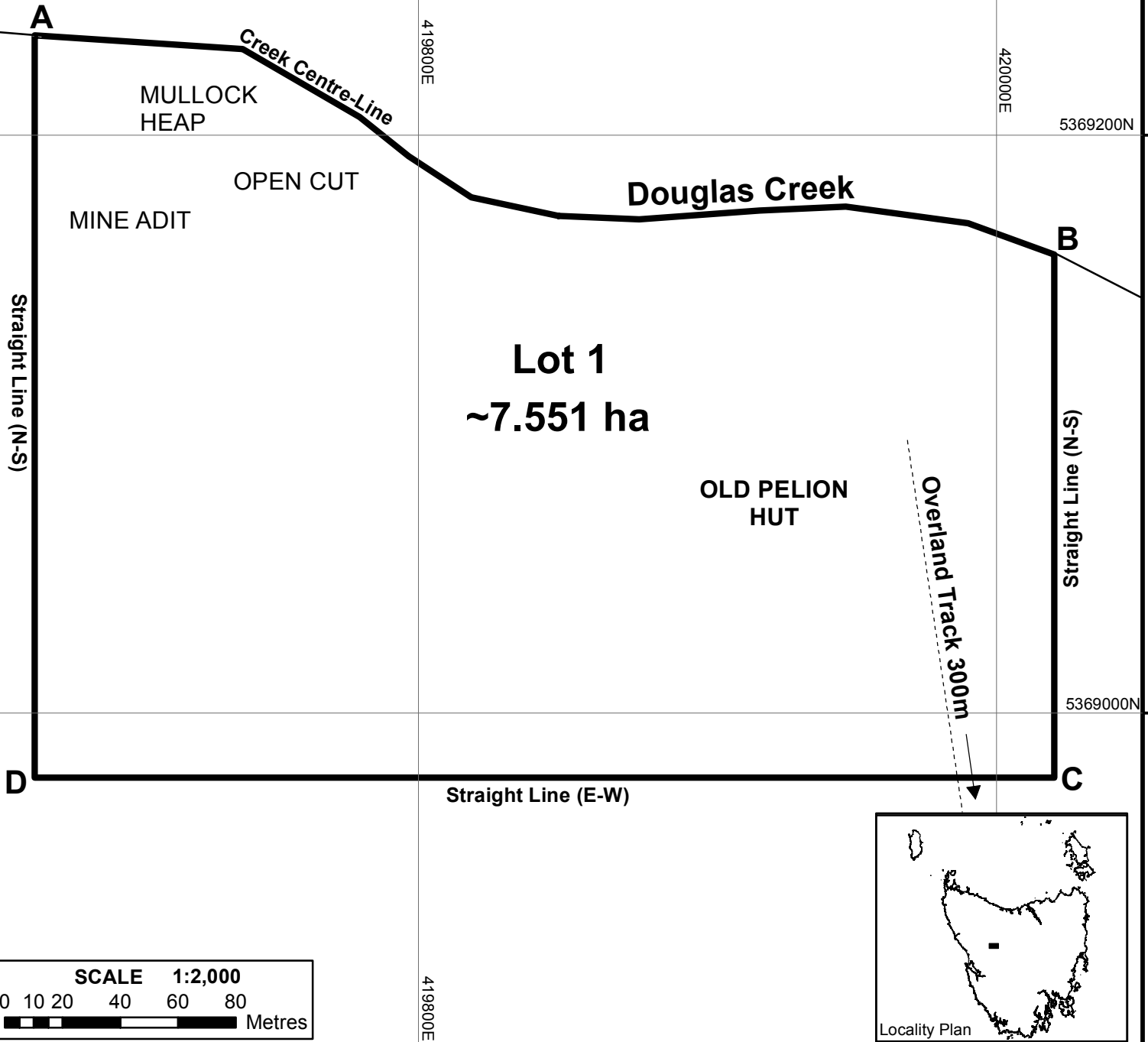


Note

1. Lot 1 represents the registered area for Pelion Copper Mine (#5616 on the Tasmanian Heritage Register).
2. Lot 1 is part of the Cradle Mountain - Lake St Clair National Park, the boundary of which is marked by a thick black line and described at right.
3. Labelled features have been identified from ortho-rectified aerial photography or topographic maps (Land Information System Tasmania), their position is approximate.
4. The registration includes one standing building and sub-surface archaeological potential.

Point & Boundary Description

- A. Intersection of Douglas Creek with 419667E.
 - B. Intersection of Douglas Creek with 420020E.
 - C. Point 420020E, 5368978N.
 - D. Point 419667E, 5368978N.
- Line A-B represents the centreline of Douglas Creek.
Lines B-C, C-D, and D-A are straight lines.



TASMAP: ACHILLES - 4036 **GRID:** MGA94 / ZONE 55 **DATUM:** AHD **CONTOUR INTERVAL:** 10m

No.	PRODUCTION / AMENDMENT	AUTHORITY	REFERENCE	DRAWN	APPROVED	DATE
1	Production	THC	5616	JS	BT	25FEB15



**Pelion Copper Mine
(including Old Pelion Hut)**

Cradle Mountain - Lake St Clair N.P.

PREPARED BY
HERITAGE TASMANIA



CENTRAL PLAN REGISTER

Surveyor General:

Date Registered: 9-JUNE-15

**CPR
9949**